



Training Pathways

Seamless
Future
Rail Skills



Occupation

Track Protection Officer and Safety Worker

Job Role

Track Protection Officer Levels 2/3

Occupation Description

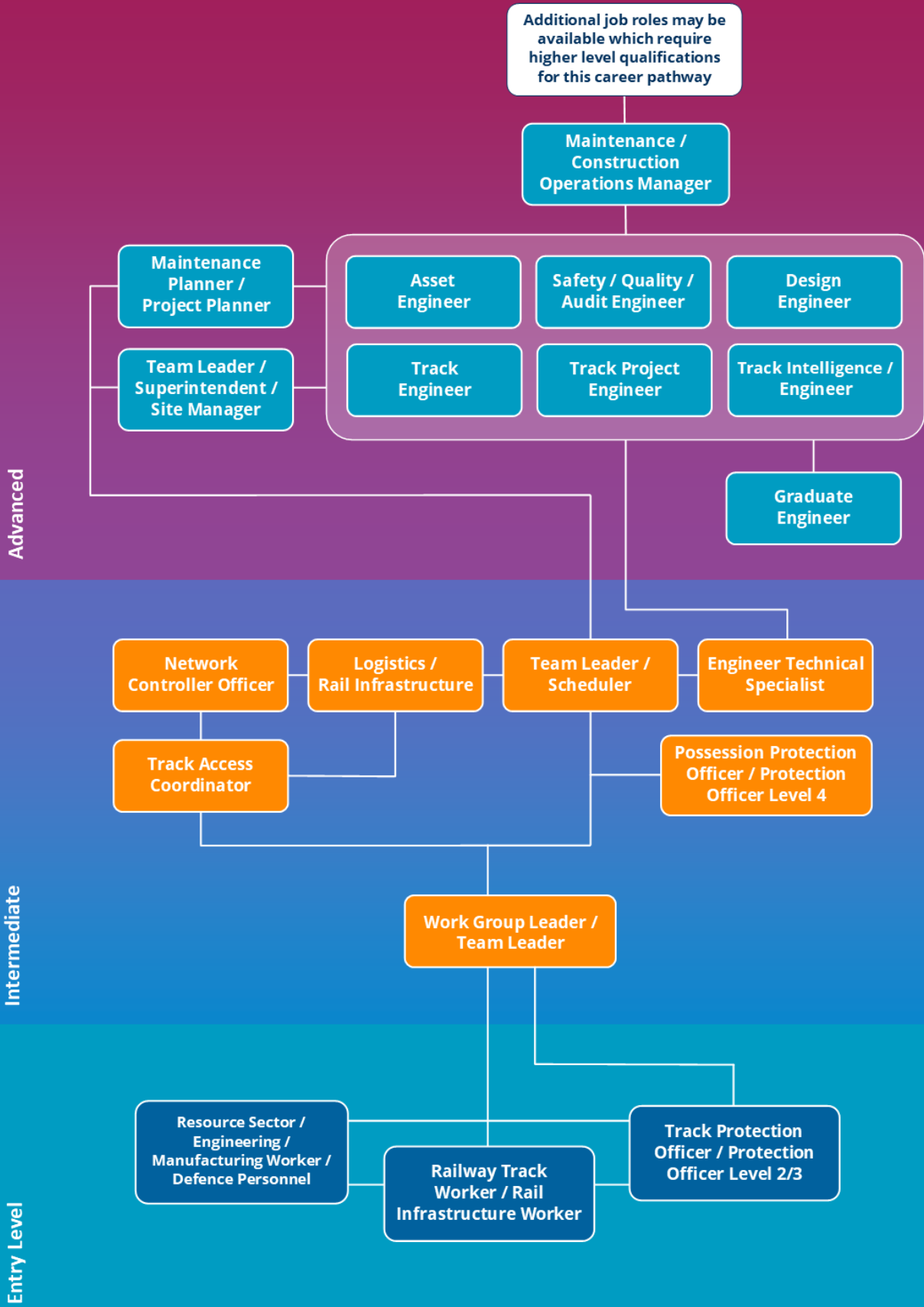
- Track protection officer implement varying levels of safeworking worksite protection for activities being undertaken in the rail corridor by rail industry workers on rail network.
- Considerations: physically demanding, requires driving and working outdoors.

Entry Pathways into this Occupation

- Construction or Property services workers
- Defence personnel
- Engineering/manufacturing worker
- Other mobile plant operators
- Possession Protection Officer
- Railway Track Plant Operator
- Railway Track Worker
- Resource sector worker.

ANZSCO: 821611

Track Protection Officer Levels 2/3 — Possible career progression in the workplace



Occupation

Track Protection Officer and Safety Worker

Job Role

Track Protection Officer Levels 2/3

Certificate II in Track Protection

- Generally, an entry level qualification.
- Foundation technical and safety skills for Protection Officers or Safety Workers Track Protection Officer and Safety Worker.
- Complete 15 Nationally recognised Units of Competency.
- Practical field base delivery model.
- Flexible program design allows multiple Entry and Exit Points.

Certificate III in Track Protection

- Generally, an operator level qualification.
- Core skills required to undertake a variety of complex safeworking worksite technical tasks across various areas of rail.
- Complete 11 Nationally recognised Units of Competency.
- Flexible program design allows multiple Entry and Exit Points.

Certificate IV in Rail Infrastructure

- Generally, a specialised infrastructure leadership level qualification.
- Advanced critical skills in planning, risk management, asset management, safeworking worksite protection and frontline leadership.
- Complete 14 Nationally recognised Units of Competency.
- Flexible program design allows multiple Entry and Exit Points.

Diploma of Rail Operations Management

- Supplements and enhance knowledge to undertake a variety of roles through development of the Engineering fundamentals across all aspects of track.
- Designed for non-tertiary qualified high potential employees who have progressed through the learning pathways and Graduate Civil Engineers from a non-rail background.

Higher level qualifications may be suitable for continuing this training pathway

Track Protection Officer Levels 2/3

Advanced Diploma

Diploma

Certificate IV

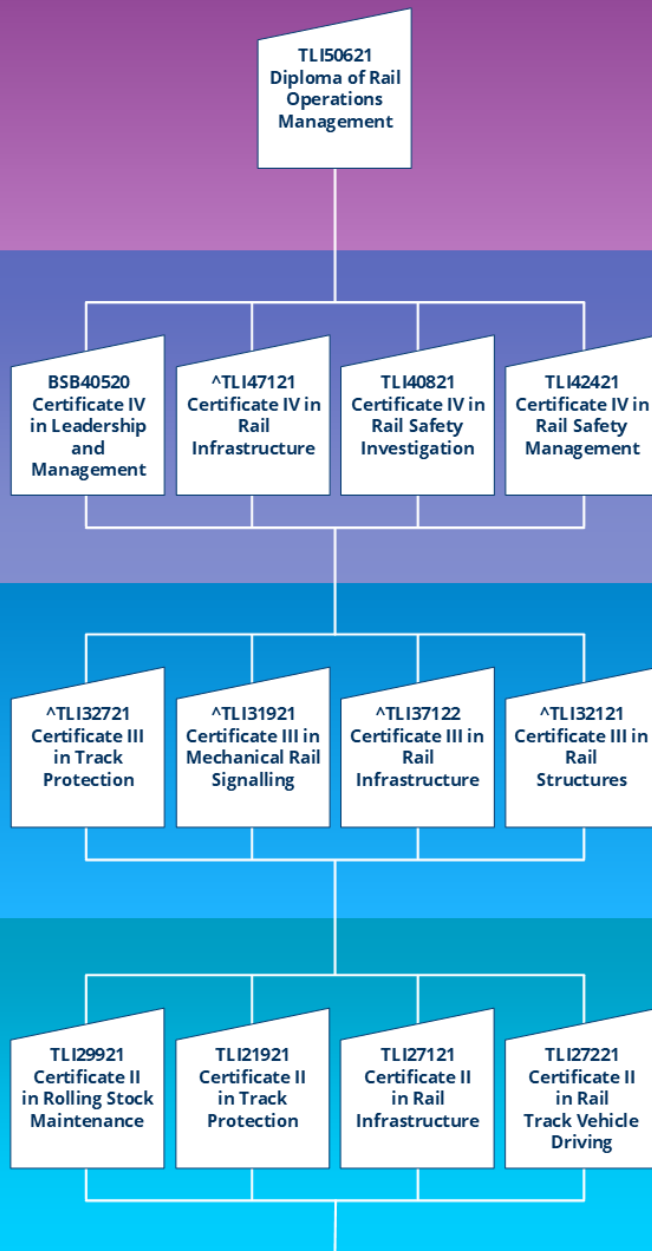
Certificate III

Certificate II

*Sample of Skill Sets

- Rolling Stock Maintenance (Electrical)
- Rolling Stock Maintenance (Mechanical)
- Rolling Stock Maintenance (Technology)
- Conduct Track Protection
- Blocking Protection
- Rail Infrastructure Induction
- Safety Critical Communications
- Access and Move a Track Vehicle within a Defined Worksite
- Travel Medium / Heavy On-Track Equipment
- Travel Track Vehicle Under Block Working Conditions

◦ Footnote
 *Footnote
 ^Footnote
 Refer to the user instructions on the next page.



User Instructions

Further information for understanding training pathways

- Where the (^) symbol appears, entry requirements apply to the qualification.
- A skill set is a single unit of competency or a combination of units of competency from a training package which link to a defined industry need. Skill sets are not formal qualifications but may prepare an individual for a specific job role or a function within a job role, or may allow entry into a formal qualification.
- Skill sets are commonly used to develop individuals or address skills shortages. Qualifications and skill sets allow the workforce to expand their skills and knowledge in their current role and support their career progression.
- (*) The skill sets listed are a sample only and additional skill sets may be available which are suitable for the training pathways shown, depending on individual progression. Skill sets allow fluidity and flexibility between varying Levels of the AQF.
- All qualifications can be undertaken as an Australian apprenticeship, subject to change based on state and territory requirements.
- (°) Diploma of Engineering Infrastructure (Rail) is accessible but enrolment in the qualification may be limited by providers.

Entry Requirements

Qualification	Entry Requirement
TLI47121 Certificate IV in Rail Infrastructure	Certificate III in Mechanical Rail Signalling, or Certificate III in Rail Structures, or Certificate III in Rail Infrastructure, or Certificate III in Track Protection, or Relevant industry experience gained by working in the rail infrastructure environment.
TLI32721 Certificate III in Track Protection	The entry requirement for this qualification is TLI21921 Certificate II in Track Protection or relevant industry experience gained by working in the rail infrastructure environment providing track protection services.
TLI31921 Certificate III in Mechanical Rail Signalling	The entry requirement for this qualification is the 6 core units of competency from TLI27121 Certificate II in Rail Infrastructure listed below or relevant industry experience gained by working within the rail infrastructure environment.
TLI37122 Certificate III in Rail Infrastructure	The entry requirement for this qualification is Certificate II in Rail Infrastructure, or relevant industry experience gained by working in the rail infrastructure environment.
TLI32121 Certificate III in Rail Structures	The entry requirement for this qualification is TLI27121 Certificate II in Rail Infrastructure (Structures) or relevant industry experience gained by working in the rail infrastructure (structures) environment.

Example Skills Matrix – Track Protection Officer Levels 2/3

Certificate II in Track Protection

TLIB2085	Apply track fundamentals
TLID0020	Shift materials safely using manual handling methods
TLIE0009	Carry out basic workplace calculations
TLIE1003	Participate in basic workplace communication
TLIF0008	Apply safety critical communications in the rail environment
TLIF0020	Safely access the rail corridor
TLIF0023	Conduct track protection assessment
TLIF0025	Follow work health and safety procedures
TLIF0027	Perform lookout duties
TLIF2010	Apply fatigue management strategies
TLIF2082	Perform handsignaller duties
TLIG0003	Work effectively with others in a team
TLIL3082	Implement absolute signal blocking
TLIU2008	Apply environmental procedures to rail infrastructure
TLIW0007	Operate under track protection rules

*Note pre-requisite units may apply

Example Skills Matrix – Track Protection Officer Levels 2/3

Certificate III in Track Protection

Units from Certificate II in Track Protection or equivalent, plus:

TLIE2029	Conduct workplace information briefings
TLIF0008	Apply safety critical communications in the rail environment
TLIF0023	Conduct track protection assessment
TLIF3003	Implement and monitor work health and safety procedures
TLIJ0003	Apply quality systems
TLIL0010	Implement a track occupancy authority
TLIL3082	Implement absolute signal blocking
TLIL3083	Implement a track work authority and manage rail traffic through worksites
TLIL3084	Implement a local possession authority
TLIW2039	Place and remove permanent way stop boards
TLIW3026	Operate stand-alone signalling/point control equipment

*Note pre-requisite units may apply